

A Letter from the President



Our last dinner meeting of the fiscal year will be held on May 17th with Sallie Sargent, the CEO of the Houston Super Bowl Host Committee, speaking that evening. She will discuss how Houston is preparing for Super Bowl LI in 2017. This will be an evening you will not want to miss and culminates a year of great speakers organized by our Programs Committee. The success of our Chapter is largely attributable to our fine sponsors. I especially want to recognize our May Platinum Sponsor, KPMG, and our Gold Sponsor, RPG. KPMG will address pending tax laws affecting debt at the PD session. Our PD Committee will be raffling a gift to a PD session attendee as an added inducement to attend. Without the generous support of our sponsors we could not accomplish all that we undertake. Please consider our sponsors when assessing the business services your companies require.

Though this is my last President's Letter, FEI is not shutting down for the summer. Far from it; FEI continues to bring events to you year-round. We will host a one day "CFO University" on June 7th at the downtown office of Deloitte. This event will provide a curriculum on finance, strategy, leadership, governance and business process enhancement. We have an exceptional set of speakers lined up for this program. Contact Logan or check the website at www.feihouston.org for further information. We will also have our usual breakfast meetings with speakers during June, July and August before resuming dinner meetings in September.

Our Chapter remains vibrant and fiscally strong thanks to a supportive membership, excellent programs, and high quality, engaged sponsors. This does not happen by chance but rather through the dedication and hard work of our officers, directors, committee chairs and committee members. It has been a privilege to serve alongside them this past year. Thank you for that opportunity.

I look forward to seeing you on May 17th.

Regards,



Joe Abell,
President, Houston Chapter of Financial Executives International

Dinner Meeting

May 17, 2016

Houston Country Club

4:30 Professional Development Session

"TAC HOT TOPIC: Proposed Section 385 Regulations – Debt/Equity" by Chetan Vagholkar and Alexander Hanhan, KPMG

5:30 Social Hour

6:30 Dinner Session

"Countdown to Kickoff" by Sallie Sargent, President & CEO, Houston Superbowl Host Committee

Register online by May 13: feihouston.org

Sponsored by:

FEI Platinum Sponsor



FEI Gold Sponsor



Congratulations to Bob Foley (photographed here with Alan Gahm) who won gift basket at the April PD Session!

Would you like the chance to win a prize too?

Attend the Monthly Meeting's Professional Development Session to be entered for our prize drawing. Must be present to WIN!

Look forward to seeing you at the next Professional Development Session!

FEI Houston Chapter Newsletter

May Meeting.....	Page 2
Upcoming Events.....	Page 2
Save the Date: FEI University.....	Page 3
New Members.....	Page 3
Mission & Goals.....	Page 3
FEI Sponsors.....	Page 3
Officers & Committee Chairs.....	Page 3

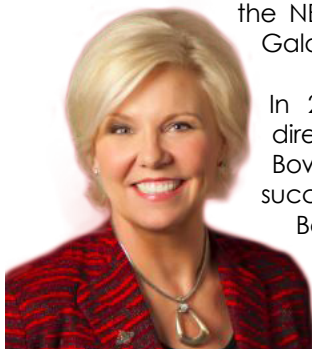
May 17, 2016 Dinner Meeting

"Countdown to Kickoff"

DINNER SESSION

Sallie Sargent, President & CEO, Houston Super Bowl Host Committee

Sallie Sargent has enjoyed a diverse and exciting career over the past 28 years. A seasoned veteran of the sports marketing and special event world, her background includes five Super Bowls, 14 Fiesta Bowls, the NBA All-Star Game; MLB's Charity Gala; and the Phoenix Open.



In 2012, Sargent was retained to direct and deliver Houston's Super Bowl Bid presentation to the NFL. She successfully secured the 2017 Super Bowl and was named President & CEO of the Host Committee in 2014 to spearhead Houston's planning and execution for Super Bowl LI.

"TAC HOT TOPIC: Proposed Section 385 Regulations – Debt/Equity"

PROFESSIONAL DEVELOPMENT SESSION KPMG

The Treasury Department and IRS on April 4, 2016, issued proposed regulations under section 385 of the Internal Revenue Code that, if finalized, would dramatically change the tax treatment of intercompany debt issued amount member of certain corporate groups. Although described by the Treasury Department to reduce the benefits of corporate tax inversions, the proposed regulations would have their greatest impact outside of the inverted company context and could result in certain debt classified as equity for tax.

Chetan Vagholkar, Partner, International Tax, KPMG

Chetan is a Partner in KPMG's International Tax practice and leads the Houston business unit International tax practice. He has more than 20 years of experience assisting companies with their International tax needs.



Chetan specializes in structuring international operations to minimize worldwide taxes and is familiar with the tax implications of cross border transactions, inbound structuring of operations for foreign multinationals, planning

using financing techniques, foreign tax credit planning, IP migration and local country tax planning. He has participated in post-merger integration projects for large multinational corporations and his experience includes effective tax rate planning, tax efficient movement of cash, interest expense apportionment, super holding company structures, inbound and outbound financing, inbound and outbound leasing structures, yieldco (foreign MLPs) structuring local country tax minimization, debt push down, inversions, inbound freeze structures, and quantitative analysis focused on foreign tax credit planning.

Chetan has extensive experience working with three large US multinationals on inversion transactions and led the recent two inversions in the drilling sector. He led cross-border structuring of three multi-billion dollar oil and gas "cash & carry" transactions for an Asian conglomerate.

Alexander Hanhan, Principal, International Tax, KPMG

Alexander is a Principal with the International Tax group in KPMG's Houston office.

Alexander works with multinational clients on international tax-related projects, primarily in the oilfield services and drilling industries. He consults on global restructurings, acquisitions, dispositions and other cross-border transactions. Alexander provides tax advice on efficient business

structures for U.S. based businesses expanding into foreign markets and foreign-based businesses entering the U.S. He also assists with the international aspects of U.S. tax and financial reporting, earnings and profits calculations, foreign tax credit calculations, FATCA, U.S. GAAP and IFRS, and other compliance projects.



2015-2016 Season UPCOMING EVENTS

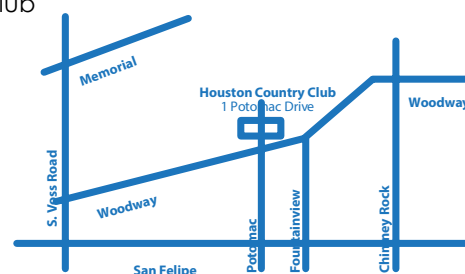
- May 17, 2016** - Monthly Meeting - Sally Sargent
- June 7, 2016** - FEI University
- June 21, 2016** - Summer Breakfast Series 1
- July 19, 2016** - Summer Breakfast Series 2
- August 16, 2016** - Summer Breakfast Series 3

Meeting Directions

Houston Country Club
1 Potomac Drive
Houston, TX 77057

Register online:
feihouston.org

Registration closes
April 8, 2016.



FEI University

Presented by FEI Houston

SAVE THE DATE!

PROGRAM OVERVIEW

The Houston Chapter of Financial Executives International (FEI Houston or FEI) is hosting a one day conference to provide a broad training curriculum for recently appointed chief financial officers and aspiring financial executives in the Houston metropolitan area. Attendance for the full conference provides 7 hours of CPE credit. The program is applicable to CFOs, Treasurers, CAOs, division controllers, VPs or directors of finance, planning, tax, internal audit, investor relations, risk management, or financial reporting.



DATE & TIME

Tuesday, June 7, 2016
Registration at 8:00A
Concludes at 4:15P
Reception to Follow

LOCATION

Deloitte
1111 Bagby
Houston, Texas 77002
Conference/Training Room

ATTENDANCE COST

\$125 for FEI members
\$250 for non-members
Proceeds help fund the initiatives and causes of the Houston Chapter of FEI

**Registration is limited,
so reserve your seat TODAY!**

SPONSORED BY:

Deloitte.

2015-2016 FEI Houston Mission Statement & Goals

MISSION:

Be the premier resource for Houston financial executives by offering

high quality educational and leadership development programs and resources to inquisitive leaders that help advance their careers and allow them a voice in financial matters important to Houston businesses.

GOALS:

- Maintain and enhance the value of the FEI brand by focusing on quality – quality members, programs and sponsors
- Be relevant to members
- Offer high quality programs and resources that help develop current and future financial officers
- Develop high quality and engaged sponsors to assist the Chapter financially, help identify programs and speakers, and help recruit new members
- Make FEI relevant and known in the community through involvement in Houston financial matters; be the voice of the financial community
- Run an effective, professional, and fiscally sound Chapter operation
- Give back to the community through our own foundation and in other ways in which our members personally choose



NEW MEMBERS

Thomas Cownan

2015-2016 STRATEGIC PARTNERS

Secure your FEI Sponsorship today!

Contact: Tony Maresca, tmaresca@bepms.com

PLATINUM MEETING SPONSORS

Alvarez and Marsal
BDO
IFS North America
Hein + Associates LLP
KPMG
Mercer
Robert Half Management Resources
Sirius Solutions

GOLD MEETING SPONSORS

Deloitte
Enterprise Fleet Management
Resources Global Professionals
SRR
Texas Capital Bank
Vinson & Elkins
Wells Fargo
Whitley Penn

EMERALD BREAKFAST MEETING SPONSORS

BBVA Compass
GulfStar Group
Riverson Consulting

EMERALD SOCIAL DINNER SPONSOR

Siegfried Group, LLP

GOLD SOCIAL DINNER SPONSOR

USI Southwest
Merrill Corporation
Jones Lang LaSalle

PLATINUM GOLF SPONSOR

Doeren Mayhew

EMERALD GOLF SPONSOR

Bank of America

GOLD GOLF SPONSORS

Experis Finance
Addison Group

ACADEMIC HONORS DAY

Aventine Hill

DIRECTORY SPONSOR

RR Donnelly

FEI HOUSTON SCHOLARSHIP FOUNDATION SPONSORS

ExxonMobil
Halliburton
Hein + Associates LLP
Mutual of Omaha Bank
Noble Energy
RR Donnelly

FEI Houston Officers and Committee Chairs

President

Joe Abell, Entropy Modulation

Immediate Past President

Chris Matlock, Lookout Capital Management

President Elect

Ann Kaesermann/Frances Hawes

Treasurer

Marcus Jones, WG Consulting, LLC

Secretary

David Boersma, Foro Energy

Programs Chair

Rob Schmitz, Flotek Industries

Membership Chair

Mike Kinney, ERS of Greater Houston

Sponsorship Chair

Tony Maresca, Bullseye Engagement, LLC

Academic Relations Chair

Vance Tillman, Tideland Signal Corporation

Professional Development Chair

Alan Gahm, Universal Weather & Aviation, Inc.

Member Career Services Chair

Bob Baumgartner

FEI Liaison Chair

Stephen Grace, H.S. Grace & Company, Inc.

Social Event Chairs

Ed Conner
Jim Davis
Paul Marsh, Dagley Insurance & Financial Services
Tony O'Dell, Ynot Consulting LLC

FEI Houston Chapter Directors

Bob Baumgartner
Jeff Curtiss, KBR
Phil Denning, Shell Oil Company
M. Colleen Estes, Sirius Solutions, LLP
Chuck Fischer
Eric Khan, Mercantile
Commercebank
Bruce Misamore, Yukos Oil Company
Ernie Pekmezaris, Pappas Restaurants
Michael J. Vitek, 212 Resources
Terry Sanford, Director Emeritus